



# Valerie Taylor Trust

Supporting the work of Valerie Taylor in Bangladesh

## Charity Details

### Charity Name

Valerie Taylor Trust

### Charity Number

1122245

### Correspondence Postal Address

4 Wilberforce Road, Coxheath, Maidstone, Kent, ME17 4HA

### Correspondence Email Address

admin@valerietaylortrust.org

### Website Address

www.valerietaylortrust.org

### Trustees

Brigadier Herbert Woolnough CBE

Mr Stuart Jeffreys

Mr Nicholas Lack

Mr Benjamin Clackson

Dr Philomena Commons

Mrs Margaret Hakim

Mr Mokhtar Hussain

Ms Janet Ivin

Dr Bryan Whitty

Ms Helen Mortimer

Mr M.A. Rashid

### Professional Advisors

#### Banker:

HSBC

4 London Road, Liphook, Hampshire, GU30 7AW

#### Independent Examiner:

Saaima Ashraf

9 Slyfield Green, Guildford, Surrey, GU1 1RL

The Valerie Taylor Trust has continued to support the core activities of the CRP as usual. Though understandably down from the last two record years following the Rana Plaza tragedy, overall income still remains over £200,000, an increase of 31% on the 2013 figure. Company donations have increased slightly and comprise 43% of the total. We would like to thank all those from all over the world, who have provided their time and support to the CRP.

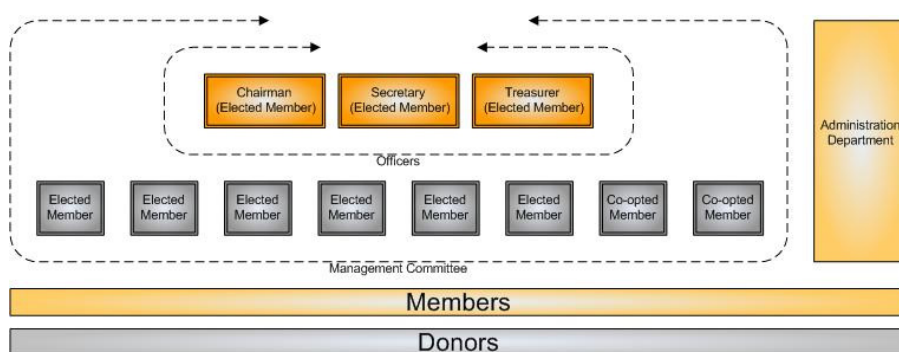
## Annual Report 2015 – 2016

### Structure, Governance and Management

The Valerie Taylor Trust is governed by a constitution adopted on 5 September 2007 as amended on 16 December 2007.

The charity is managed and administered by a Management Committee. The Management Committee for the year 2015-2016 comprised of elected and co-opted members who are also the trustees of the charity.

The chart below indicates the organisational structure of the Valerie Taylor Trust for the year 2015 - 2016:



### Recruitment of the Management Committee

At the 2015 annual general meeting, three members of the Management Committee stood down, but were willing to be re-elected. Valid nominations were received and accordingly these three were elected. At the Management Committee meeting held after the annual general meeting, two further members were co-opted, and one invited to attend Trustee meetings. The Chairman was also re-adopted for a further year. One co-opted member has since stood down.

At the 2016 annual general meeting one third of the members of the Management Committee will again stand down but will be eligible for re-election. The Management Committee may also appoint up to three co-opted members.

All members of the Valerie Taylor Trust are eligible to become members of the Management Committee. To become a member of the Management Committee, a member of the Valerie Taylor Trust needs to be nominated by another member of the Valerie Taylor Trust and stand for election at the next Annual General Meeting.

## Our Objects

The objects of the Valerie Taylor Trust are to contribute financially to the treatment, rehabilitation and reintegration into the community of disabled people in Bangladesh, particularly those in financial need.

We also aim to assist with education of the public and relevant health care workers about the problems faced by disabled people and ways in which these difficulties can be overcome.

The Trustees have decided that at the moment the best way of fulfilling these aims is by making grants to the Centre for the Rehabilitation of the Paralysed (CRP).

# Total amount raised = £206,399

## Financial Review

Funds are raised by donations, membership support, fundraising events, trusts and companies. Expenditure is aimed to promote all these forms of giving, such as providing access on the Just Giving website, Gift Aid envelopes, leaflets and mailing campaigns.

During the period of this report, the total income was £206,399. This consisted of donations and subscriptions totalling £101,528, reclaimed tax as Gift Aid of £8,845, £5,921 from other activities, and £90,106 from companies. 51% of the total income was for Restricted Funds. This reduces CRP's flexibility to spend where they see fit. A sizable proportion of the total income was raised by CRP directly, with the Trust just being used as a safe conduit of funds into Bangladesh.

Expenses related to supporting this giving were £2,992.

£228,000 was sent to CRP during the year, and the balance of cash funds remaining was £6,625.

The Trust does not currently have an investment policy because all receipts, net of expenses, are sent to CRP.

## Progress at the CRP

In 2013, CRP published its 5-year Strategic Plan, focusing on: improvement and expansion of existing services, strengthening professionalism through partnership with national/international bodies, better socio-economic inclusion through quality community services, and achieving financial sustainability. At the midway point:

- The CRP now employs nearly 900 staff in 10 centres which provided services to c.70,000 individuals this year – c.1 million outpatient appointments in Dhaka alone.
- 11 different courses lead to qualifications in physio, occupational, speech and language therapies, and radiology. A typical foreign involvement is the MOU with Duke University, USA. The Nursing college accepts 80 students each year, and the School of Orthotics and Prosthetics took in its second intake of 10 diploma students.
- Financial sustainability has been achieved, with contributions from income-generating activities, especially the metal and woodwork shops of the Vocational Training Unit, now relocated to Ganakbari.
- CRP continues with 31 projects, in cooperation with c.25 organisations from government, commerce and charities. Established examples are AHEAD (Access to Health and Education for all Children and Youth with Disabilities) and ALPD (Access to Livelihood for People with Disabilities). This year, CRP took over funding for the Bangladesh government Access to Information programme, which empowers persons with disability by using IT facilities to deliver medical and rehabilitation services at low cost. 525 patients in 8 centres country-wide received follow-up by phone, home visit, telemedicine and free health accessories. Likewise the Access and Empowerment Project enables c.500 disabled children to participate in mainstream sports activities.

Given these initiatives, achieved with the help of VTT grants, VTT Trustees consider they have complied with their duty under section 4 of the Charities Act 2006 concerning public benefit, primarily the advancement of health and the relief of those in need by reason of disability.

## Achievements

- Membership of the Valerie Taylor Trust currently stands at 240.
- The grant this year remains over £200,000 of which nearly half is from company donations.
- Despite concerns over security in Bangladesh, 48 volunteers and trainers visited the CRP from Great Britain last year; and a total of 120 visitors from USA, Canada, Japan, Sweden, Australia, Germany, Austria the Netherlands, Switzerland, Malaysia and Thailand.

## Fundraising Activities

- Charlotte Balaam organized a Spring Ball at Harlton, Cambridge on 25th April, which raised a magnificent £1820.
- A Curry Evening in Marden on June 12 was very successful and a total of £658 was raised
- £580 was raised by Bryan Whitty and Elizabeth Arthur through an event at St. John's Church, Renfield, Glasgow.
- Jean Ward raised over £645 through an event she organized in Manningtree, Essex

## Member Activities

- Two Trustees visited CRP, meeting Valerie and Shafiqul Islam, the Executive Director.
- The compelling book 'Journeys' compiled by Liz Timms will be on sale at the Annual Meeting. She is now producing a history of the CRP, and welcomes the recollections of anyone who has had an involvement with CRP, however serious or trivial, sad or significant from whatever period of CRP's or indeed Val's life.

## CONTACT for VALERIE TAYLOR TRUST

**Administration Address:** 4 Wilberforce Road, Coxheath, Maidstone, Kent, ME17 4HA

**Tel:** 01622 743011 **E-mail:** admin@valerietaylortrust.org **Web:** www.valerietaylortrust.org

**Valerie Taylor Trust** is a charity registered in England and Wales (number 1122245)

**Valerie Taylor Trust**

Financial Statement for 2015-16  
Approved by independent examiner

<b>Income &amp; Expenditure</b>	<b>2015-16</b>	<b>2014-15</b>	<b>2013-14</b>	<b>2012-13</b>	<b>2011-12</b>	<b>2010-11</b>	<b>2009-10</b>	<b>2007-09</b>
	<b>£</b>	<b>£</b>	<b>£</b>	<b>£</b>	<b>£</b>	<b>£</b>	<b>£</b>	<b>£</b>
<b>Income</b>								
Donations and Subscriptions								
Restricted Funds	48,715	101,584	76,525	36,448	38,899	25,087	21,539	31,944
Unrestricted Funds	52,812	50,223	69,717	46,732	37,780	28,371	28,019	55,322
Tax refund - Gift Aid	8,845	9,163	11,379	11,621	8,632	17,075	7,740	8,946
Other Charitable Activity								
Sales of donated items	1,147	684	666	163	337	1,224	803	544
Fundraising events	4,743	25,729	42,885	40,849	20,647	45,532	57,033	32,500
Corporate Donations								
Restricted Funds	56,256	13,930	-	-	-	-	-	-
Unrestricted Funds	33,850	68,597	83,320	-	-	-	-	-
Bank interest	31	18	12	18	-	-	-	98
<b>Total Income</b>	<b>206,399</b>	<b>269,928</b>	<b>284,504</b>	<b>135,831</b>	<b>106,295</b>	<b>117,289</b>	<b>115,134</b>	<b>129,354</b>
<b>Expenditure</b>								
Printing & stationery	980	1,213	1,269	1,176	957	817	344	1,890
Postage	149	200	148	47	352	477	314	751
Meetings	686	799	687	697	342	294	541	181
Bank	131	120	204	150	116	104	100	153
VTT Web site	30	30	30	66	210	30	147	170
Fundraising	613	1,326	425	689	368	1,688	869	1,047
Other	402	402	250	250	250	250	250	-
<b>Total Expenditure</b>	<b>2,992</b>	<b>4,092</b>	<b>3,013</b>	<b>3,075</b>	<b>2,595</b>	<b>3,660</b>	<b>2,565</b>	<b>4,192</b>
<b>Net Income</b>	<b>203,408</b>	<b>265,836</b>	<b>281,491</b>	<b>132,756</b>	<b>103,700</b>	<b>113,629</b>	<b>112,569</b>	<b>125,162</b>
<b>Grants Made</b>								
Indirect support to CRP								
CRP website	90	90	164	210	90	305	312	260
Other payments on behalf of CRP	-	3,223	4,900	13	198	64	4,542	314
Direct transfer of funds to CRP	228,000	234,000	276,500	157,000	94,000	98,000	123,500	102,850
<b>Total Support to CRP</b>	<b>228,090</b>	<b>237,313</b>	<b>281,564</b>	<b>157,223</b>	<b>94,288</b>	<b>98,369</b>	<b>128,354</b>	<b>103,424</b>
<b>Balance</b>								
Payments due	- 250	- 250	- 250	- 250	- 299	- 489	- 1,399	- 145
Cash - Restricted Funds	55	7,321	1,400	-	3,039	1,711	-	5,991
Cash - Unrestricted Funds	6,570	23,834	1,200	3,512	24,488	10,174	3,208	7,926
Gift Aid refund due from HMRC	3,556	3,709	3,740	2,900	3,401	9,820	4,146	7,966
<b>Total Funds to carry forward</b>	<b>9,931</b>	<b>34,613</b>	<b>6,090</b>	<b>6,162</b>	<b>30,629</b>	<b>21,216</b>	<b>5,955</b>	<b>21,738</b>

**Notes**

- 1 Tax refund includes £1,419 from Just Giving (gross of costs). Accounting policy changed this year to show Just Giving / Paypal donations gross of costs
- 2 Sales includes cards, calendars, books and DVDs
- 3 Indirect support includes sterling payments for CRP projects
- 4 Restricted Funds may only be spent on specific agreed objectives. RF accounted for 51% of income in 2015/16 vs 43% in 2014/15 & 27% in 2013/14.
- 5 All Gift Aid refunds treated as Unrestricted
- 6 Interest received with Gift Aid treated as Bank Interest

SJ Apr 2016

## **INDEPENDENT EXAMINER'S REPORT TO THE TRUSTEES OF THE VALERIE TAYLOR TRUST. REGISTERED CHARITY NO: 1122245**

I report on the accounts of the Trust for the year ended 05 April 2016, which are attached.

### **Respective responsibilities of trustees and examiner**

The charity's trustees are responsible for the preparation of the accounts. The charity's trustees consider that an audit is not required for this year under section 144(2) of the Charities Act 2011 (the 2011 Act) and that an independent examination is needed.

It is my responsibility to:

- examine the accounts under section 145 of the 2011 Act
- to follow the procedures laid down in the general Directions given by the commission under section 145(5)(b) of the 2011 Act
- to state whether particular matters have come to my attention

### **Basis of independent examiner's report**

My examination was carried out in accordance with the general Directions given by the Charity Commission. An examination includes a review of the accounting records kept by the charity and a comparison of the accounts presented with those records. It also includes consideration of any unusual items or disclosures in the accounts, and seeking explanations from you as trustees concerning any such matters. The procedures undertaken do not provide all the evidence that would be required in an audit and consequently no opinion is given as to whether the accounts present a 'true and fair view' and the report is limited to those matters set out in the next statement.

### **Independent examiner's statement**

In connection with my examination, no matter has come to my attention:

- (1) which gives me reasonable cause to believe that in any material respect the requirements:
  - to keep accounting records in accordance with section 130 of the 2011 Act and
  - to prepare accounts which accord with the accounting records and comply with the accounting requirements of the 2011 Act have not been met or
- (2) to which, in my opinion, attention should be drawn in order to enable a proper understanding of the accounts to be reached

Signed



Saaima Ashraf  
ACA, ICAEW Chartered Accountant

3 Repton Road, Earley, READING RG6 7LJ  
30 August 2016